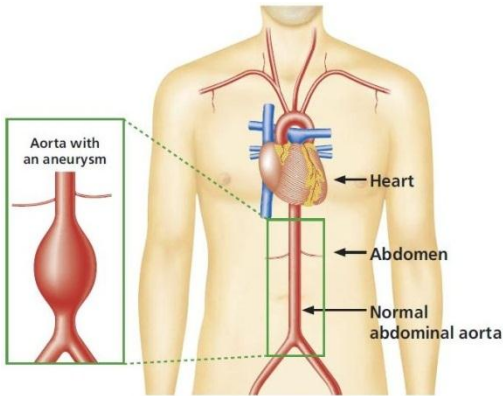


# ABDOMINAL AORTIC ANEURYSM



## What is an AAA

- ❖ An abdominal aortic aneurysm is a weakening and expansion of the aorta, the main blood vessel in the body
- ❖ Large aneurysms are rare but can be very serious
- ❖ Approximately 6,000 people in England and Wales die every year from ruptured abdominal aortic aneurysms



## Screening for AAA

- The NHS invites men for AAA screening during the year they turn 65
- Eligibility for screening under the NHS AAA Screening Programme is restricted to men in their 65th year or older. This is because the primary risk factors for abdominal aortic aneurysms are male gender and older age.
- Individuals who undergo male to female gender reassignments retain the male genetic risk of developing AAA in later life but the Programme will not receive their demographic data if they have registered as a woman. If such an individual self-refers for screening then the local programme will screen them.
- Men over 65 who have not been screened previously can arrange a screening appointment by contacting their local programme directly on 01803 655441
- Screening involves an ultrasound scan that takes around 10 minutes
- The NHS AAA Screening Programme aims to reduce deaths from ruptured AAA amongst men aged 65 and over by up to 50%

